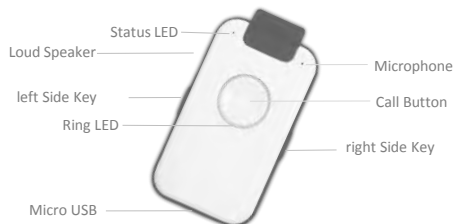


Get Started

DECT indePendant

Your private Emergency Call

indePendant overview



indePendant is your daily assistant with central Call Button. If you need help, press Call Button and you will be connected with neighbours or friends. Fall Detection or Smoke Alarm automatically trigger Help Call. All activities are conducted by the language assistant. Phone book (10 entries) with list of names is read.

1

SET-into-OPERATION



step 1: Charge Device



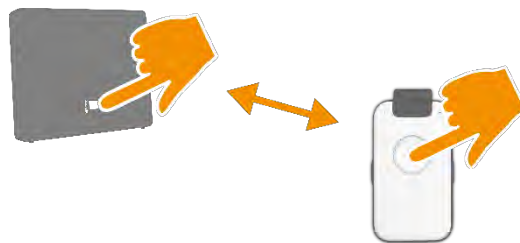
1. Place Charging Disc on a flat, non-slip surface
2. Connect the Charging Disc mains via supplied USB cable
3. Place Device for approx. 30 min on Charging Disc

Note: Device will get a little warm; this is normal

2



step 2: Register Device to Base Station

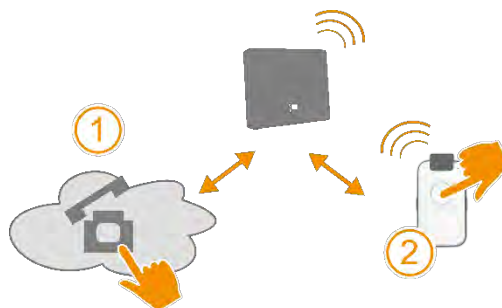


1. Place Device close to DECT base station
2. Activate Registration mode of the base station
3. Press Call Button of Device to start the Registration
4. Pay attention to announcements of Voice Assistant

3



step 3: check telephone connection



1. Call Device with your mobile phone
2. If Device rings, answer the call

Note: The calling number is stored as the tenth Family&Friends number as well as the emergency number for help, fall detection and smoke alarm calls.

Change or supplement this number with the PC APP.

4

Device is ready to use

Congratulations

now you can

- receive phone calls
- call phone number (see Family & Friends)
- execute a Help Call

following features are enabled:

- Fall Detection with automatic help call
- Smoke alarm call

You can configure via PC APP:

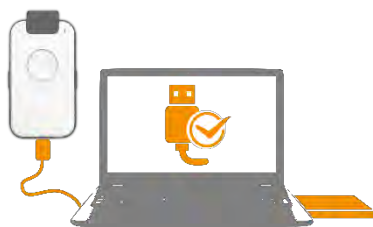
- all contacts for emergency (help, fall, smoke alarm)
- more Family & Friends contacts
- Time and Reminder Messages

5

CONFIGURATION



start PC APP



1. Connect enclosed USB stick to PC
2. Select „INDEPENDANT“ with WIN Explorer
3. Start „PC_APP“ program and if necessary, confirm the driver installation
4. Connect Device via USB cable to PC
5. Start "PC_APP" program again and follow instructions of PC APP which are very simple

6

Tips

Charging : Make sure that Device is correctly placed on Charging Disc. LED indicates battery level status during charging. Note that Device cannot be registered, if battery is not sufficiently charged.

Registration: Please keep in mind that DECT base stations exit Registration mode automatically after 5 min.

Use PC APP to register Device, if PIN of the base station is not '0000'.

Trigger Help Call: Select and test "Ringing Time" in order to ensure, that the called party has sufficient time to answer the call. The ringing time should not be too long in order to not delay the call of the subsequent numbers . Better choose more repetitions in order to find a contact quickly and safely.

9

Test Device functions



trigger Help Call



1. Press Call Button > 2 sec
2. Help Call Sequence is starting
3. To cancel Call Sequence press Call Button again

7

LEDs

Color	Display	Status LED	Ring LED
RED	flashes	DECT or Battery out of range / order	Help Call is setup
	constant	charge ca. 60 min	Help Call is active
YELLOW	flashes	DECT or Battery sufficient	- DECT Registration - Fall Detection active
	constant	charge ca. 30 min	connected with PC APP
GREEN	flashes	DECT or Battery OK	Family&Frriends Call is setup
	constant	Battery is fully charged	Family&Frriends Call is active

10



Call Family & Friends



1. Press side key to select wanted number (name)
2. Press Call Button to trigger call
3. To cancel call press Call Button again

8

Product Information

Title indePendant
Type DECT PENDANT

For more information please contact your distributor or visit his website

You will find more up-to-date operating instructions on enclosed USB-stick or on your distributor's website

11